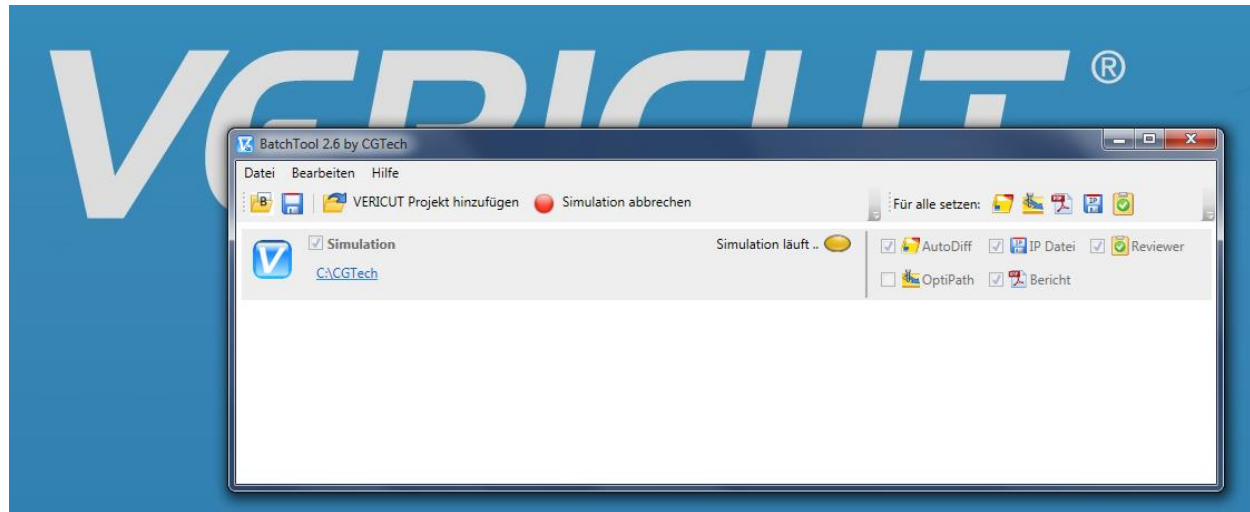


CGTech BatchTool

Contact: Andreas Strauß < andreas.strauss@cgtech.com >



Get it here: <http://box.maschinen-simulation.de/BatchTool/download.php>

Install

- Install Microsoft .Net Framework v4.0(+):
<http://www.microsoft.com/de-de/download/details.aspx?id=17718>
- Copy to a local folder.
- Add CGTECH_LOCALE to your Environment Variables, supported languages:
 - english (default / optional)
 - german
 - french
- Optional: Add CGTECH_INSTALL & CGTECH_PRODUCTS to your Environment Variables

Settings

Settings are stored to: "C:\Users\USERNAME\CGTech_BatchTool.prefs".

Command Line Parameters

BatchTool.exe C:\testprojekt.vcbatch **--batchp --close**

- Starts the Batch process directly
- --batchp: Start Simulation
- --close: Closes the BatchTool after Simulation

Additional Parameters

With Additional Parameters enabled, you can add own command line options to a batch process (See Automating VERICUT in VERICUT Help File).

